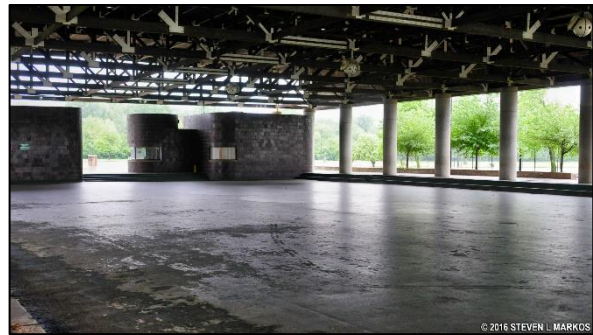


CHBC Meeting at Anacostia Park – Logistics Guide

We are thankful for the generosity of the National Park Service who are allowing us to hold our Sunday meetings in Anacostia Park. We have a permit that allows us to meet in one of the fields of the Park when the weather is nice. When the weather is inclement, our permit allows us to meet in the skating pavilion. The field that we are planning to gather on this Sunday can be found on the map below the heading titled “Our Meeting”.

In the case of inclement weather, we will be using the pavilion (pictured below). It is about the size of a soccer field, open on all sides, with a roof about 40 feet above ground.

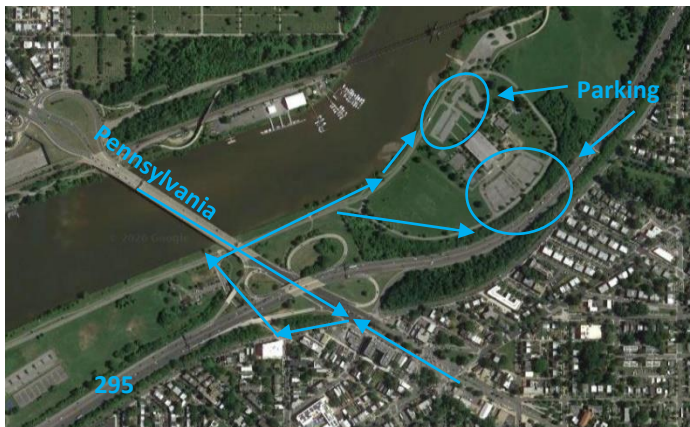


This document is designed with two purposes in mind. First, this document is designed to help you know what to expect so you can be prepared and so that things can go as smoothly as possible (1 Cor. 14:40). Second, this document is designed to help you decide if you can and should join us. There are many reasons why some members of our congregation should not join us, especially those of you who see yourselves as higher risk for COVID-19. Hopefully as you see what precautions we plan to take and which precautions we do not plan to take, you can make an informed decision about whether or not to come. Even though our church meeting, you should feel free in your conscience not to join us if that seems to be the wisest course of action. The sermon audio will be posted on the website following the service as usual.

If you or any member of your household have been sick with symptoms the CDC has associated with COVID19, please refrain from attending for at least 14 days unless you have tested positive. Anyone who is exhibiting symptoms during a service will be kindly asked to leave.

Please plan to arrive 15-20 minutes in advance of our 11am start time as the process of getting everyone in and seated will take some time. We plan for the service to finish by 12:15pm.

Getting There



Address: We are meeting at Anacostia Park, 1900 Anacostia Drive SE, Washington, DC.

Driving Directions: (From Capitol Hill) Take Pennsylvania Ave Southeast. Turn right onto Fairlawn Ave SE just after the bridge BEFORE the gas station. Turn right again on Nicholson St. Finally take another right onto Anacostia Dr and proceed to the parking. (From 295) Take the exit for Pennsylvania Ave E toward Andrews Air Force Base. Then follow the same directions above: Fairlawn -> Nicholson->Anacostia Ave.

Public Transportation: from the Potomac Ave Metro Station (Orange/Blue/Silver) walk SE on Pennsylvania Ave. Once you cross the bridge, turn left on Anacostia Riverwalk trail. Proceed on the trail to the pavilion.

Bike, Walk: The roller skating pavilion can be accessed from the Anacostia Riverwalk East Bank Trail.

Parking

- Parking attendants will direct you to parking once you arrive at Anacostia Park. Please be aware that we will be sharing the parking lots with general park attendees and sometimes with another church.
- Handicap Spots: Please do not park in a handicap spot unless you have a permit.
- Double-Parking: We will not be double-parking any of the lots. Please do not park anyone in.
- Parking Lots: You may park in any of the parking lots. The closest are the lot on the Southeast side of the pavilion and the smaller lot to the North.
- Please do not park on the grass. This is of particular importance to the Park Service.

What to Bring

Face Coverings: The Mayor of DC has made the wearing of face coverings mandatory in outdoor public spaces with a few exceptions. As such, we ask all who are attending this gathering without a medical exemption from their doctor to wear a face covering that covers both nose and your mouth for the duration of the time they are at Anacostia Park with us unless you are inside a private vehicle (adults and children except those aged two or younger).

Seating: You will need to provide your own seating if you choose not to stand.

Bible and Bulletin: Please bring your own Bible as we will not have pew Bibles with us. We will not be providing bulletins; you can download or print your own at www.capbap.org.

Other Items: Please keep the forecasted temperature in mind as you decide what to wear since we are out of doors. In addition, please bring a bag to collect your own trash.

Children: we cannot provide any childcare at this meeting, but all children are welcome.

Our Meeting



Seating: We will be gathering in the field on the far side of the basketball courts next to the pavilion. Please bring your own blankets and chairs if you would prefer not to stand.

Distancing: please remain at least six feet from all individuals not in your household. Ushers will be available to help us maintain appropriate distance.

Singing: we plan to sing several hymns. As with the rest of the service, you should wear a mask when singing.

Restrooms: as shown. Please plan on not using the restroom during this time if possible. Public restrooms are available at

the Pirate Ship playground just to the other side of the Pennsylvania Avenue bridge.

Dismissal

As you leave, please take care to maintain at least six feet between your party and others. Ushers will help to coordinate an orderly dismissal. If driving, there are three roads by which you may exit the park: Nicholson St, Good Hope Dr, and South Capitol St. In order to prevent traffic build-up we ask that groups heading in different directions take different park exits.

Staying Around: this is a public park, so you're welcome to remain in the park as long as you would like. Because we have volunteers that need to clean, however, we ask that you vacate the immediate area where we are gathering within 45 minutes of the end of the service.

Leaving by Car

For those traveling home via 295/695, we ask that you exit the park by Nicholson St. From there you'll turn right on 22 St SE. Then proceed to Minnesota Ave and take a left. Take Minnesota Ave to Pennsylvania Ave where you'll turn left and get on to 295 N/S.

For those returning to Capitol Hill, please exit by turning left on Good Hope Rd. From there, proceed to Martin Luther King Jr Ave and turn left. From there Martin Luther King Jr Ave turns into 11 St SE once you cross the 11th Street bridge onto Capitol Hill.

